



HANNAH BLACKMORE

White Light

A Collection of Minimal Seascape Paintings

4 DECEMBER 2025 - 25 JANUARY 2026

THE STUDIO GALLERY | SALAMANCA ARTS CENTRE

Level 2/ 77 Salamanca Place, Hobart, Tasmania

www.sac.org.au

White Light

HANNAH BLACKMORE

ARTIST STATEMENT

White Light is a collection of minimal seascape paintings that explore the quiet beauty of the coast. Soft tones, open space, and subtle shifts of light capture the calm, meditative presence of sea and sky.

In White Light, the sea and coast are distilled to their purest elements - horizon, colour, and light. These paintings invite a moment of pause, focusing on the spaces in between: the shift of sky over water, the soft glimmer of light, the stillness of a horizon line. Stripped back to essentials, each work reflects the serenity and openness of the ocean while leaving space for the viewer's own response.

Rooted in the Tasmanian coastline yet universal in their atmosphere, these seascapes are about more than place - they are about presence. Minimal in form yet rich in texture and tone, they capture fleeting moods of nature and turn them into lasting impressions. White Light is an exhibition that speaks to calm, clarity, and the quiet power of simplicity.

4th December 2025 - 25th January 2026
The Studio Gallery, Salamanca Arts Centre

HANNAH BLACKMORE

Hannah Blackmore is a professional artist from Jersey in the Channel Islands, best known for her atmospheric landscapes and seascapes. Influenced by her island upbringing and artistic parents, Hannah pursued a degree in Fine Art, and it was in Hobart, Tasmania, that she fully embraced her calling as a full-time artist. Her work, often depicting stormy skies and coastal landscapes, stands out for its unique technique of mixing plaster with paint to create rich textures.

A resident artist at Salamanca Arts Centre for over ten years, Hannah's art has been showcased in several galleries as well as The Henry Jones Art Hotel in Hobart. With over a dozen solo exhibitions since 2015, her art is celebrated for its relaxing and emotionally resonant qualities and is collected both nationally and internationally. When not painting, Hannah enjoys walking her giant dog Oscar, having coffee with her husband Steve, and travelling, all of which add richness to her life and art.

info@hannahblackmore.com
HANNAHBLACKMORE.COM



White Sea

30cm x 30cm

Acrylic on Canvas

Framed in Dark Grey Timber

\$500



White Shimmer

30cm x 30cm

Acrylic on Canvas

Framed in Dark Grey Timber

\$500



White Haze

30cm x 30cm

Acrylic on Canvas

Framed in Dark Grey Timber

\$500



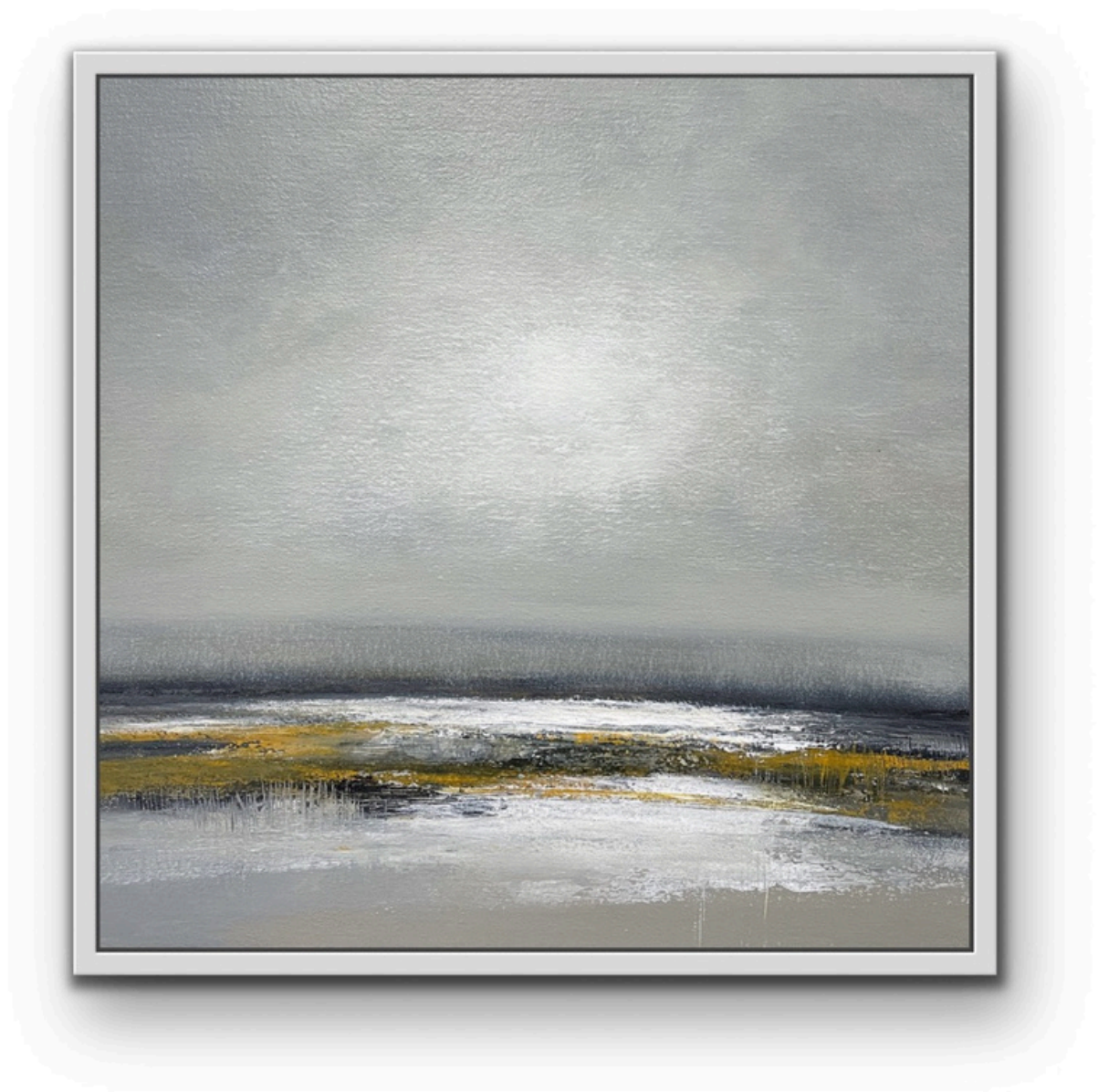
White Dusk

30cm x 30cm

Acrylic on Canvas

Framed in Dark Grey Timber

\$500



White Coast

40cm x 40cm

Acrylic on Canvas

Framed in White Timber

\$800



White Mist

40cm x 40cm

Acrylic on Canvas

Framed in White Timber

\$800



White Silence

40cm x 40cm

Acrylic on Canvas

Framed in White Timber

\$800



White Sand

40cm x 40cm

Acrylic on Canvas

Framed in White Timber

\$800



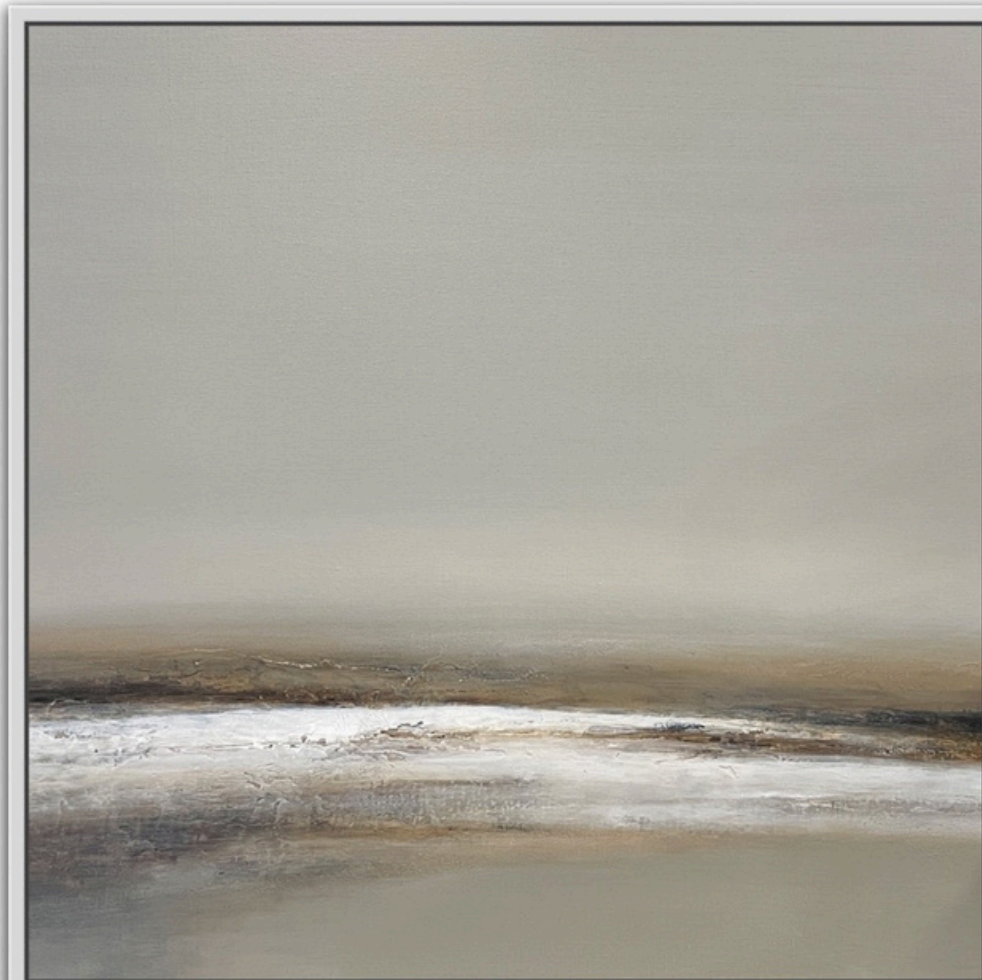
White Waves

60cm x 60cm

Acrylic on Canvas

Framed in White Timber

\$1200



White Shore

60cm x 60cm

Acrylic on Canvas

Framed in White Timber

\$1200



White Light

75cm x 75cm

Acrylic on Canvas

Framed in Dark Grey Timber

\$2200



White Tide

60cm x 90cm

Acrylic on Canvas

Framed in White Timber

\$2200



White Horizon

100cm x 100cm

Acrylic on Canvas

Framed in Black Timber

\$3500



White Solitude

100cm x 100cm

Acrylic on Canvas

Framed in Black Timber

\$3500



White Cloud

90cm x 120cm

Acrylic on Canvas

Framed in Dark Grey Timber

\$4500



Thank you for your interest in my work.

All prices include shipping worldwide.

All paintings in this exhibition have a professional finish, are framed and ready to hang.

If you would like more information about any of the paintings in *White Light*, please contact me at the address below. Thank you.

info@hannahblackmore.com

hannahblackmore.com

Instagram: [@hannahblackmoreartist](https://www.instagram.com/hannahblackmoreartist)

Facebook: Hannah Blackmore Artist

HANNAHBLACKMORE.COM